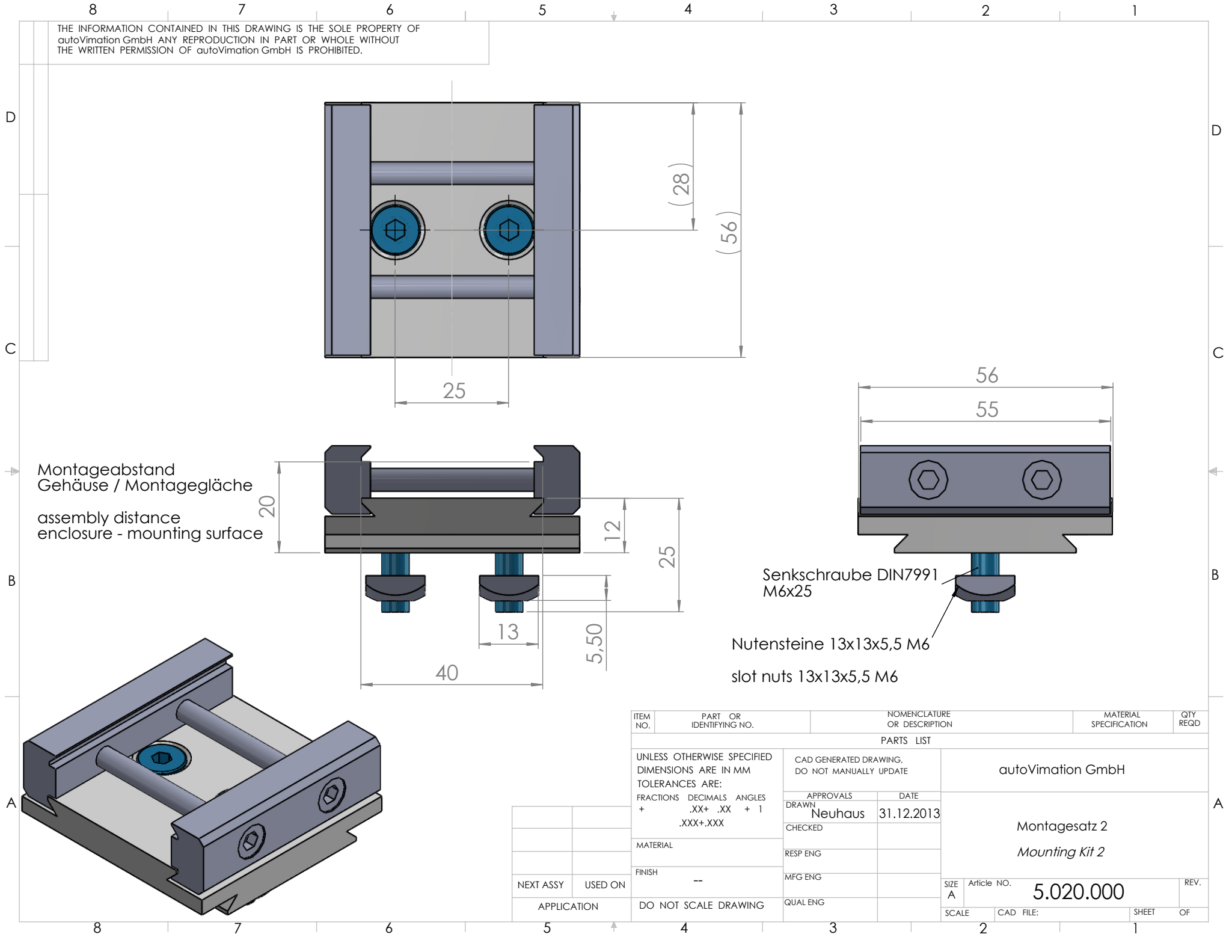


THE INFORMATION CONTAINED IN THIS DRAWING IS THE SOLE PROPERTY OF autoVimation GmbH. ANY REPRODUCTION IN PART OR WHOLE WITHOUT THE WRITTEN PERMISSION OF autoVimation GmbH IS PROHIBITED.



Montageabstand
Gehäuse / Montagefläche
assembly distance
enclosure - mounting surface

Senkschraube DIN7991
M6x25

Nutensteine 13x13x5,5 M6
slot nuts 13x13x5,5 M6

| ITEM NO. | PART OR IDENTIFYING NO. | NOMENCLATURE OR DESCRIPTION | MATERIAL SPECIFICATION | QTY REQD |
|---|-------------------------|---|------------------------|-----------------------------------|
| PARTS LIST | | | | |
| UNLESS OTHERWISE SPECIFIED DIMENSIONS ARE IN MM | | CAD GENERATED DRAWING, DO NOT MANUALLY UPDATE | | autoVimation GmbH |
| TOLERANCES ARE: | | APPROVALS DATE | | |
| FRACTIONS DECIMALS ANGLES | | DRAWN Neuhaus 31.12.2013 | | Montagesatz 2 Mounting Kit 2 |
| + .XX+ .XX + 1 | | CHECKED | | |
| .XXX+.XXX | | RESP ENG | | |
| MATERIAL | | MFG ENG | | SIZE A Article NO. 5.020.000 REV. |
| FINISH -- | | QUAL ENG | | |
| NEXT ASSY | USED ON | SCALE CAD FILE: | | SHEET OF |
| APPLICATION | | DO NOT SCALE DRAWING | | |